

Questions on Business Analysis Planning and Monitoring

1. Who is responsible for ensuring that the business analysis plan is compatible with the project plan?
 - a. Business analyst
 - b. Project manager**
 - c. Implementation SME
 - d. Project sponsor

2. When planning business analysis activities, which two planning tools are often used?
 - a. Activity list and WBS**
 - b. Resource allocation and estimation
 - c. Schedule and activity list
 - d. Milestones and activity list

3. _____ describes the approach to be taken to structure traceability, requirement attributes to be used, process for requirements prioritization and

how the changes to requirements will be handled during the project life cycle.

- a. Requirements package
- b. Requirements structure
- c. Requirements management plan**
- d. Traceability matrix

Questions on Elicitation

- 4. Among following which is objective of elicitation?
 - a. Gather complete requirements**
 - b. Document requirements
 - c. Validate requirements
 - d. None of the above.

- 5. A needs to identify the stakeholder that will be responsible for authorizing the actions needed in order to meet the identified business need. Which stakeholder does A need to identify?
 - a. **Sponsor**
 - b. Customer

- c. User
 - d. Project Manager
6. The functional scope of a prototype can be categorized in which of the following ways?
- a. Visible or invisible
 - b. Horizontal or vertical**
 - c. Active or passive
 - d. Structured or unstructured

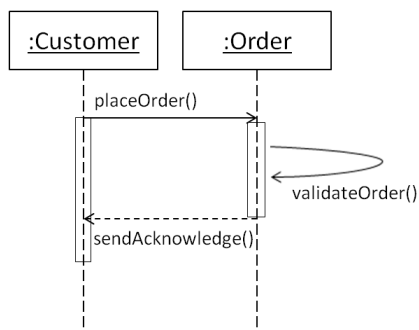
Questions on Requirements Analysis and design

7. What is the name for the individual pieces of information that describe an entity in an entity-relationship diagram?
- a. Identifier
 - b. Relationship
 - c. Attribute**
 - d. Cardinality

8. Data flow diagrams show how _____ flows through a system.

- a. Processes
- b. Requirements
- c. Decisions
- d. Information**

9. What does the vertical dotted line in the below sequence diagram represent?



- a. Lifeline**
- b. Sequence
- c. Activator
- d. Message flow

Questions on Requirements LCM

10. Requirements to be re-usable must be
- a) **Clearly named and stored in a repository.**
 - b) Implemented earlier.
 - c) Approved by all stakeholders.
 - d) There is no specific requirement.
11. Primary reason for developing requirements package is
- a) **To communicate requirements to stakeholders.**
 - b) Prescribed by BABOK.
 - c) It's a good thing to do.
 - d) Requirement packages are not needed.
12. Artefact which maintains relationships between business objectives, requirements, other team deliverables, and solution components is
- a) Business rules analysis.
 - b) Prototyping.
 - c) Scenarios and use cases.
 - d) **Traceability matrix.**

Questions on Solution evaluation

13. Data about data is known as
- a. Data flow diagrams.
 - b. Use case.
 - c. Traceability matrix.
 - d. Meta data.**
14. SMEs that assist with communicating change to their stakeholders and creating support among those stakeholders for the change are known as_____.
- a. Domain SME.
 - b. Training head.
 - c. Org. change management SMEs.**
 - d. Project manager.
15. The objective of requirements allocation is to
- a. Please stakeholders.
 - b. Satisfy design team.
 - c. Maximize possible business value.**
 - d. Allow funding in a staggered manner.

Questions on Strategy analysis

16. Attributes mentioned as part of SMART objective is
- a. Specific, Measurable, Achievable, Relevant, Testable
 - b. Specific, Measurable, Achievable, Relevant, Time bound**
 - c. Specific, Measurable, Achievable, Reliable, Time bound
 - d. Scientific, Measurable, Achievable, Relevant, Time bound.
17. Who creates the vision for the project?
- a. Project manager.
 - b. Executive team.
 - c. Business analyst.
 - d. Sponsor.**
18. Which type of requirements are higher-level statements of the goals, objectives, or needs of the enterprise.
- a. Business requirements.**
 - b. Stakeholder requirements.
 - c. Functional requirements.

d. Non-functional requirements.

Questions on underlying competencies

19. The ability to understand business quickly using prior experiences is?

- a. Business knowledge
- b. Organization knowledge
- c. Business acumen**
- d. Personal quality

20. The ability to integrate disparate information aspects is?

- a. Visual thinking
- b. Conceptual thinking**
- c. Systems thinking
- d. Business Knowledge.

21. The ability to develop confidence is?

- a. Personal professionalism
- b. Trust worthiness**
- c. Personal accountability
- d. Personal quality